



# PRODUCT CATALOGUE 2023

poultry

tilapia

cooked products

sausages

---

# Awaken people to a more prosperous world.

THIS IS OUR PURPOSE

C.Vale was established in 1963 when 24 farmers joined to create a cooperative company. Nowadays, the cooperative has over 26.2 thousand members and 13.7 thousand employees and is the second largest Brazilian agribusiness cooperative, with over a hundred branches across the states of Paraná, Santa Catarina, Mato Grosso, Mato Grosso do Sul, Rio Grande do Sul and also in Paraguay.





## Principles and Values

Focus on the client

Be compromised

Act with honesty

Act with respect

Practice the sustainability

## Food Quality and Safety Policy

Meet the expectations of our members, suppliers, clients, consumers, employees and the community through a safe, legal and authentic system of continuous improvement of people, processes and products.

## Sustainability Policy

Produce food through continuous improvement, aiming to reduce and/or optimize the use of natural resources, promote the economic, social and environmental development, preserving the integrity of communities to the future generations, complying with the legal requirements and improving socio-environmental performance.





**1** POULTRY SLAUGHTERHOUSE  
more than  
**620 thousand  
chickens a day**

**2** FURTHER PROCESSING PLANT  
(COOKING PLANT)  
more than  
**180 tons a day**

**3** FISH SLAUGHTERHOUSE  
more than  
**170 thousand  
tilapia a day**

**2**





3

1

2

# Poultry & Fish production chain



# Certificates



McDonald's



HACCP



PAACO



ALO Free Certificate



ISO 9001



BRC



Halal Certificate



BAP - Best Aquaculture Practices

---

# POULTRY AVES

breasts

legs

wings

giblets

others

industrial raw  
materials

---



Chicken Breast C.Vale  
Pechuga de Pollo C.Vale  
Peito de Frango C.Vale



# BREASTS

## BREAST

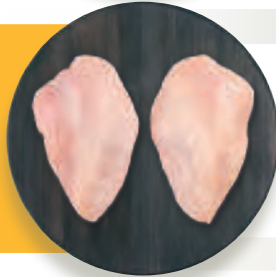
Skinless boneless breast  
Pechuga sin hueso y sin piel  
Peito sem osso e sem pele



WEIGHT RANGE	PACKAGING	CARTON CONFIGURATION
100g-110g	IQF/Bags	10kg (5x2kg)
140g-160g		10kg (4x2.5kg)
150g-210g		675kg (90x7.5kg) jumbo
160g-180g		
Unsize	Trays	10.8kg (12x0.9kg)

## BREAST

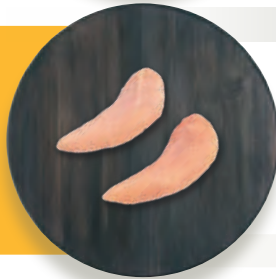
SEASONED OR NATURAL  
Skinless boneless breast  
Pechuga sin hueso y sin piel  
Peito sem osso e sem pele



PACKAGING	CARTON CONFIGURATION
Bags	10kg (5x2kg) 15kg (2x7.5kg)
	12kg (6x2kg) 18kg (1x18kg)
	15kg (1x15kg) 675kg (90x7.5kg) jumbo
Layer Pack	10kg (Honey Comb) 10kg/15kg
IQF/Bags	10kg (4x2.5kg)
Trays	10.8kg (12x0.9kg)

## INNER FILLET

Breast inner fillet  
Filete de pechuga de pollo - filetillo  
Filezinho de peito - sassami



PACKAGING	CARTON CONFIGURATION
Bags	10kg (1x10kg)
	15kg (2x7.5kg)
	675kg (90x7.5kg) jumbo
Layer Pack	10kg/12kg/15kg/18kg
IQF/Bags	15kg (10x1kg) 15kg (5x2kg)
Trays	10.8kg (12x0.9kg)

## BONE-IN BREAST

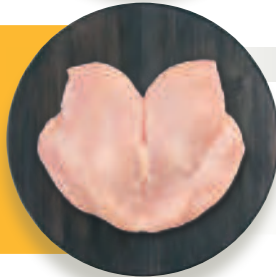
Bone in skin on half breast  
Media pechuga con hueso y con piel  
Meio peito com osso e com pele



PACKAGING	CARTON CONFIGURATION
Layer Pack	15kg

## BUTTERFLY BREAST

Skinless boneless breast - butterfly  
Pechuga sin hueso y sin piel  
Peito sem osso e sem pele



PACKAGING	CARTON CONFIGURATION
Bags	10kg (10x1kg)
	15kg (15x1kg)
Layer Pack	10kg/15kg/18kg

# BREASTS

## BUTTERFLY BREAST

Skin-on boneless breast - butterfly  
*Pechuga sin hueso y con piel*  
*Peito sem osso e com pele*



PACKAGING	CARTON CONFIGURATION
Bags	10kg (10x1kg) 15kg (15x1kg)
Layer Pack	10kg/15kg/18kg

## BREAST CARTILAGE

Breast cartilage  
*Cartilago de pechuga*  
*Cartilagem de peito*

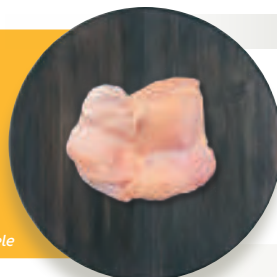


PACKAGING	CARTON CONFIGURATION
Bags	10kg (1x10kg) 12kg (12x1kg)

# LEGS

## SKINLESS BONELESS LEG MEAT

Skinless boneless leg meat  
*Pierna sin hueso y sin piel*  
*Coxa e sobrecoxa sem osso e sem pele*



PACKAGING	CARTON CONFIGURATION
Bags	12kg (6x2kg) 675kg (90x7.5kg) jumbo
Layer Pack	10kg/12kg/15kg/18kg
IQF/Bags	10kg (10x1kg)
Trays	10.8kg (12x0.9kg)

## SKIN-ON BONELESS LEG MEAT

Skin-on boneless leg meat  
*Pierna sin hueso y con piel*  
*Coxa e sobrecoxa sem osso e com pele*



WEIGHT RANGE	PACKAGING	CARTON CONFIGURATION
200g up 200-220g 240-260g 260g-280g 280g-300g 300-350g	Bags	12kg (6x2kg)
Unsize	Layer Pack IQF/Bags	10kg, 12kg, 15kg or 18kg 10kg (10x1kg)
Unsize	Trays Bags	10.8kg (12x0.9kg) 675kg (90x7.5kg) jumbo

# LEGS

## THIGHS

Skin in bone in thighs

*Crotramuslos con hueso y con piel - truto corto*

*Sobrecoxas com osso e com pele*



### PACKAGING

Layer Pack

### CARTON CONFIGURATION

10kg/12kg/15kg/18kg

IQ/Bags

12kg (1x12kg)

Trays

10.8kg (12x0.9kg)

## DRUMSTICKS

Drumsticks

*Muslos con hueso y con piel - truto largo*

*Coxas com osso e com pele*



### PACKAGING

Layer Pack

### CARTON CONFIGURATION

10kg/12kg/15kg/18kg

IQ/Bags

12kg (1x12kg)

Trays

10.8kg (12x0.9kg)

## LEG QUARTER

Leg quarter

*Cuarto trasero*

*Coxa e sobrecoxa com porção dorsal*



### PACKAGING

Layer Pack

### CARTON CONFIGURATION

10kg/12kg/15kg

## WHOLE LEG

Skin on bone in whole leg

*Pierna con hueso y con piel - truto entero*

*Coxa e sobrecoxa com osso e com pele*



### PACKAGING

Layer Pack

### CARTON CONFIGURATION

10kg/12kg/15kg

## KNEE CARTILAGE

Knee cartilage

*Cartilago de rodilla*

*Cartilagem de joelho*



### PACKAGING

Bag

### CARTON CONFIGURATION

12kg (6x2kg)

12kg (12x1kg)

# WINGS

## WINGS

3 joint wing  
 Alas enteras  
 Asas inteiras



PACKAGING	CARTON CONFIGURATION
Layer Pack	10kg/12kg/15kg

## MIDDLE JOINT WINGS

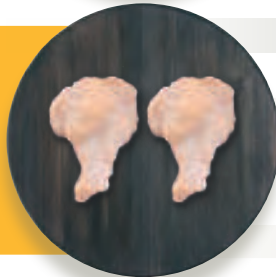
Middle joint wings  
 Medio del ala  
 Meio da asa



PACKAGING	CARTON CONFIGURATION
Bags	15kg (3x5kg)
Layer Pack	10kg/12kg/15kg
IQF/Bags	10kg (10x1kg)
	10kg (5x2kg)
	12kg (1x12kg)
Trays	10.8kg (12x0.9kg)

## DRUMETTE

Drumette  
 Alitas  
 Coxinha de asa



PACKAGING	CARTON CONFIGURATION
Bags	15kg (3x5kg)
Layer Pack	10kg/12kg/15kg
IQF/Bags	10kg (10x1kg)
	12kg (1x12kg)
Trays	10.8kg (12x0.9kg)

## WING TIP

Wing tip  
 Punta del ala  
 Ponta de asa



PACKAGING	CARTON CONFIGURATION
Bags	15kg (3x5kg)

# GIBLETS

## GIZZARDS

Gizzards  
Mollejas  
Moela



### PACKAGING

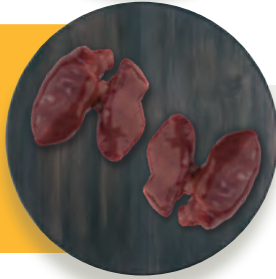
Bags

### CARTON CONFIGURATION

10kg (10x1kg)  
15kg (1x15kg)  
18kg (18x1kg)

## LIVER

Liver  
Hígado  
Fígado



### PACKAGING

Bags

### CARTON CONFIGURATION

10kg (10x1kg)

# OTHERS

## FEET

Feet  
Pies  
Pés



### PACKAGING

Bags

### CARTON CONFIGURATION

15kg (2x7.5kg)  
15kg (3x5kg)

## MDM

Mechanically deboned  
chicken meat

Carne mecánicamente  
separada (CMS)

Carne mecánicamente  
separada (CMS)



### PACKAGING

Block

### CARTON CONFIGURATION

Variable

Bags

15kg (1x15kg)  
18kg (1x18kg)

# OTHERS

## MRM (RED)

Mechanically recovered chicken meat

*Carne de pollo recuperada mecánicamente*

*Carne de frango mecanicamente recuperada*



### PACKAGING

### CARTON CONFIGURATION

Bags

15kg (1x15kg)  
18kg (1x18kg)

## MRM (WHITE)

Mechanically recovered chicken meat

*Carne de pollo recuperada mecánicamente*

*Carne de frango mecanicamente recuperada*



### PACKAGING

### CARTON CONFIGURATION

Bags

15kg (1x15kg)  
18kg (1x18kg)

## SCAPULA

Skin on bone in scapula

*Escápula con hueso y con piel*

*Raquete com osso e com pele*



### PACKAGING

### CARTON CONFIGURATION

Layer Pack

15kg

IQF/Bags

10kg (10x1kg)  
10kg (5x2kg)

Trays

10.8kg (12x0.9kg)

## SHAWARMA

Shawarma

Shawarma

Shawarma



### PACKAGING

### CARTON CONFIGURATION

Bags

15kg (3x5kg)

Layer Pack

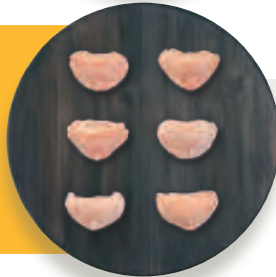
15kg

## TAILS

Tails

Cola

Sambiquira



### PACKAGING

### CARTON CONFIGURATION

Bags

15kg (1x15kg)

# INDUSTRIAL RAW MATERIALS

## SKIN

Skin  
Piel  
Pele



### PACKAGING

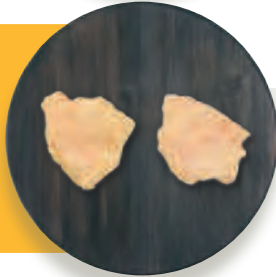
Bags

### CARTON CONFIGURATION

15kg (1x15kg)

## FAT

Fat  
Grasa  
Gordura



### PACKAGING

Bags

### CARTON CONFIGURATION

18kg (1x18kg)

---

# TILAPIA

## TILÁPIA

---

chilled

frozen

others

---



*Tilapia Fillet C.Vale*  
*Filete de Tilapia C.Vale*  
*Filé de Tilápia C.Vale*



# CHILLED

## TILAPIA FILLET

### DEEP SKINNED

Tilapia fillet

Filete de tilapia

Filé de tilápia



WEIGHT RANGE	PACKAGING	CARTON CONFIGURATION
4-6oz	Layer Pack Styrofoam	10lb
5-7oz		
7-9oz		
9-11oz		

## TILAPIA FILLET

### SHALLOW SKINNED

Tilapia fillet

Filete de tilapia

Filé de tilápia



WEIGHT RANGE	PACKAGING	CARTON CONFIGURATION
4-6oz	Layer Pack Styrofoam	10lb
5-7oz		
7-9oz		
9-11oz		

## WHOLE TILAPIA

Gutted scaled whole tilapia

Tilapia eviscerada sin escamas

Tilápia eviscerada sem escamas



WEIGHT RANGE	PACKAGING	CARTON CONFIGURATION
350g-550g	Styrofoam	10lb
450g-550g		
550g-650g		

## SLICED TILAPIA

Sliced tilapia

Tilapia rabanada

Posta de tilápia



WEIGHT RANGE	PACKAGING	CARTON CONFIGURATION
-	Styrofoam	10lb

# FROZEN

## TILAPIA FILLET DEEP SKINNED

Tilapia fillet  
Filete de tilapia  
Filé de tilápia



WEIGHT RANGE	PACKAGING	CARTON CONFIGURATION
4-6oz 5-7oz 7-9oz 9-11oz	IQF/Bags	20lb
Unsize	IQF/Bags	9kg (9x1kg) 16kg (16x1kg)
Unsize	IWP	10lb/20lb

## TILAPIA FILLET SHALLOW SKINNED

Tilapia fillet  
Filete de tilapia  
Filé de tilápia



WEIGHT RANGE	PACKAGING	CARTON CONFIGURATION
4-6oz 5-7oz 7-9oz 9-11oz	IQF/Bags	20lb
Unsize	IQF/Bags	9kg (9x1kg) 16kg (16x1kg)
Unsize	IWP	10lb/20lb

## WHOLE TILAPIA

Gutted scaled whole tilapia  
Tilapia eviscerada sin escamas  
Tilápia eviscerada sem escamas



WEIGHT RANGE	PACKAGING	CARTON CONFIGURATION
350g-550g 450g-550g 550g-650g 550g-750g 650g-750g 750g-950g 950 up	IWP	20lb/40lb

## SLICED TILAPIA

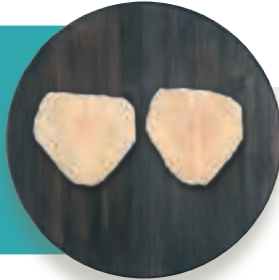
Sliced tilapia  
Tilapia rabanada  
Posta de tilápia



PACKAGING	CARTON CONFIGURATION
IQF/Bags	16kg (16x1kg)

## TILAPIA BELLY

Tilapia belly  
*Ventre de tilapia*  
*Ventrecha de tilápia*



### PACKAGING

Block

### CARTON CONFIGURATION

1200kg (80x15kg)

## BELLY IN CHUNKS

Tilapia belly in chunks  
*Ventre de tilapia en cebos*  
*Ventrecha de tilápia em iscas*



### PACKAGING

IQF/Bags

### CARTON CONFIGURATION

12kg (12x1kg)

## FILLET CUT IN STRIPS

Tilapia fillets cut in strips  
*Filetes de tilapia en tiras*  
*Filé de tilápia em tiras*



### PACKAGING

IQF/Bags

### CARTON CONFIGURATION

12kg (12x1kg)

# OTHERS

## SKIN

Tilapia skin  
*Piel de tilapia*  
*Pele de tilápia*



### PACKAGING

Bags

### CARTON CONFIGURATION

15kg (1x15kg)  
 18kg (1x18kg)

## SCALES

Tilapia scales  
*Escamas de tilapia*  
*Escamas de tilápia*



### PACKAGING

Bags

### CARTON CONFIGURATION

18kg (1x18kg)

## MDM

Mechanically deboned meat  
*Carne de tilapia mecánicamente separada*  
*Carne de tilápia mecánicamente separada*



### PACKAGING

Bags

### CARTON CONFIGURATION

15kg (1x15kg)

## MRM

Mechanically recovered meat  
*Carne de tilapia mecánicamente recuperada*  
*Carne de tilápia mecánicamente recuperada*



### PACKAGING

Bags

### CARTON CONFIGURATION

15kg (1x15kg)



---

# COOKED PRODUCTS *INDUSTRIALIZADOS*

---

cooked

grilled

roasted

breaded

---



*Chicken Bait C.Vale  
Cebo de Pollo C.Vale  
Isclas de Frango C.Vale*

# COOKED

## DICED

### BREAST/INNER FILLET/ BONELESS LEG/MIXED

Cooked chicken diced  
*Cortes de pollo cocido - dados*  
*Cortes de frango cozidos - cubos*



WEIGHT RANGE	PACKAGING	CARTON CONFIGURATION
10 to 25mm	IQF/Bags	10kg (4x2.5kg) 10kg (10x1kg) 550kg (55x10kg) jumbo

## CHUNKS

### BREAST/INNER FILLET/ BONELESS LEG

Cooked chicken chunks  
*Cortes de pollo cocido - cebos*  
*Cortes de frango cozido - iscas*



PACKAGING	CARTON CONFIGURATION
IQF/Bags	9kg (9x1kg) 10kg (4x2.5kg) 550kg (55x10kg) jumbo

## SHREDDED BREAST

Cooked, shredded breast fillet  
*Filete de pechuga cocido y desmechado*  
*Filé de peito cozido e desfiado*



PACKAGING	CARTON CONFIGURATION
IQF/Bags	6kg (6x1kg) 7.5kg (3x2.5kg) 450kg (45x10kg) jumbo

## STRIPS

### BREAST/INNER FILLET/ BONELESS LEG

Cooked chicken strips  
*Cortes de pollo cocidos - tiras*  
*Cortes de frango cozidos - tiras*



PACKAGING	CARTON CONFIGURATION
IQF/Bags	6kg (6x1kg) 7.5kg (3x2.5kg) 450kg (45x10kg) jumbo

# GRILLED

## STRIPS

### BREAST/INNER FILLET/ BONELESS LEG

Cooked chicken strips

*Cortes de pollo cocido  
y grillados - tiras*

*Cortes grelhados  
e cozidos de frango - tiras*



WEIGHT RANGE	PACKAGING	CARTON CONFIGURATION
9 to 20mm	IQF/Bags	8kg (8x1kg) 10kg (4x2.5kg) 550kg (55x10kg) jumbo

## DICED

### BREAST/INNER FILLET/ BONELESS LEG/MIXED

Cooked, grilled, chicken diced

*Cortes de pollo cocido  
y grillados - dados*

*Cortes grelhados  
e cozidos de frango - cubos*



PACKAGING	CARTON CONFIGURATION
IQF/Bags	10kg (10x1kg) 10kg (4x2.5kg) 550kg (55x10kg) jumbo

## CHUNKS

### BREAST/INNER FILLET/ BONELESS LEG

Cooked, grilled, chicken chunks

*Cortes de pollo cocidos  
y grillados - cebos*

*Cortes grelhados  
e cozidos de frango - iscas*



PACKAGING	CARTON CONFIGURATION
IQF/Bags	9kg (9x1kg) 10kg (4x2.5kg) 550kg (55x10kg)



# ROASTED

## INNER FILLET

Roasted inner fillet  
*Cortes grillado de pollo - filetillo*  
*Cortes cozidos e grelhados de frango - filezinho*



PACKAGING	CARTON CONFIGURATION
IQF/Bags	9kg (9x1kg)
	10kg (4x2.5kg)
	550kg (55x10kg) jumbo

## STRIPS BREAST/INNER FILLET/ BONELESS LEG

Chicken roasted strips  
*Cortes de pollo asados - tiras*  
*Cortes assados de frango - tiras*



WEIGHT RANGE	PACKAGING	CARTON CONFIGURATION
9 to 20mm	IQF/Bags	8kg (8x1kg)
		10kg (4x2.5kg)
		550kg (55x10kg) jumbo

## DICED BREAST/INNER FILLET/ BONELESS LEG

Roasted and diced chicken  
*Cortes de pollo asados - dados*  
*Cortes assados de frango - cubos*



WEIGHT RANGE	PACKAGING	CARTON CONFIGURATION
10 to 25mm	IQF/Bags	10kg (10x1kg)
		10kg (4x2.5kg)
		550kg (55x10kg) jumbo

## CHUNKS BREAST/INNER FILLET/ BONELESS LEG

Chicken roasted chunks  
*Cortes de pollo asados - cebos*  
*Cortes assados de frango - iscas*



PACKAGING	CARTON CONFIGURATION
IQF/Bags	9kg (9x1kg)
	10kg (4x2.5kg)
	550kg (55x10kg) jumbo

## BREAST

Roasted whole breast chicken  
*Pechuga de pollo asado*  
*Cortes assados de frango - peito*



PACKAGING	CARTON CONFIGURATION
IQF/Bags	9kg (9x1kg)
	10kg (4x2.5kg)
	550kg (55x10kg) jumbo

# BREADED

## CHICKEN

Breaded chicken  
Rebozado de pollo  
Empanado de frango



### PACKAGING

IQF/Bags

### CARTON CONFIGURATION

**9.6kg** (32x0.3kg)  
**9.920kg** (22x420g)  
**10kg** (4x2.5kg)  
**10kg** (10x1kg)  
**550kg** (55x10kg) jumbo

## CHUNKS

BREAST/INNER FILLET/  
BONELESS LEG

Chicken battered chunks  
Empanizado de pollo en cebos  
Isclas de frango empanadas



### PACKAGING

IQF/Bags

### CARTON CONFIGURATION

**9.6kg** (32x0.3kg)  
**10kg** (4x2.5kg)  
**10kg** (10x1kg)  
**500kg** (50x10kg) jumbo

## BATTERED CHICKEN

Chicken battered nuggets  
Nuggets de pollo rebozados  
Empanado de frango



### PACKAGING

IQF/Bags

### CARTON CONFIGURATION

**8kg** (8x1kg)  
**10kg** (4x2,5kg)  
**500kg jumbo**(50x10kg) jumbo

## CHICKEN INNER FILLET

Breaded chicken inner fillet  
Filetillo de pollo empanado  
Filezinho de frango empanado



### PACKAGING

IQF/Bags

### CARTON CONFIGURATION

**7.2kg** (12x0.6kg)  
**9kg** (9x1kg)  
**10kg** (4x2.5kg)

## CHICKEN BURGER

Breaded chicken burger

Hamburguesa de pollo empanizada  
Hambúrguer de frango empanado



### PACKAGING

IQF/Bags

### CARTON CONFIGURATION

**7.2kg** (15x0.48kg)  
**9kg** (9x1kg)  
**10kg** (133 to 141x75g)  
**550kg** (55x10kg) jumbo

# BREADED

## CHICKEN CRUNCHY

Breaded chicken  
 Rebozado de pollo  
 Empanado de frango



### PACKAGING

IQF/Bags

### CARTON CONFIGURATION

9.6kg (32x0.3kg)  
 10kg (4x2.5kg)  
 10kg (10x1kg)  
 550kg (55x10kg) jumbo

## GOLDEN BALL

Breaded chicken - golden ball  
 Rebozado de pollo  
 Empanado de frango



### PACKAGING

IQF/Bags

### CARTON CONFIGURATION

9.6kg (32x0.3kg)  
 10kg (4x2.5kg)  
 10kg (10x1kg)  
 550kg (55x10kg) jumbo

## STEAK

Breaded chicken steak  
 Rebozado de pollo  
 Empanado de frango



### PACKAGING

IQF/Bags

### CARTON CONFIGURATION

7.2kg (12x0.6kg)  
 9kg (9x1kg)  
 10kg (95 to 100x100g)

## CHICKEN FINGERS

Breaded chicken fingers  
 Rebozado de pollo - fajitas  
 Empanado de frango - tirinhas



### PACKAGING

IQF/Bags

### CARTON CONFIGURATION

9kg (9x1kg)  
 9kg (30x0.3kg)  
 10kg (4x2.5kg)  
 500kg (50x10kg) jumbo

## BREAST CHUNKS

Starch coated chicken breast  
 Cebo de pechuga de pollo - empanizado  
 Iscas de peito de frango - empanadas



### PACKAGING

IQF/Bags

### CARTON CONFIGURATION

10kg (10x1kg)  
 10kg (4x2.5kg)  
 550kg (55x10kg) jumbo

# BREADED

## CHICKEN BREAST FILLET

Breaded chicken breast fillet  
*Pechuga de pollo empanizada*  
*Peito de frango empanado*



### PACKAGING

IQF/Bags

### CARTON CONFIGURATION

7.2kg (12x0.6kg)  
 9kg (9x1kg)  
 10kg (4x2.5kg)  
 550kg (55x10kg) jumbo

## CHICKEN BREAST STRIPS

Breaded chicken breast strips  
*Tiras de pechuga empanizadas*  
*Tiras de peito empanadas*



### PACKAGING

IQF/Bags

### CARTON CONFIGURATION

7.2kg (12x0.6kg)  
 8kg (8x1kg)  
 450kg (45x10kg) jumbo

## CHICKEN BREAST STRIPS HOT & SPICY

Breaded chicken breast strips  
*Tiras de pechuga empanizadas*  
*Tiras de peito empanadas*



### PACKAGING

IQF/Bags

### CARTON CONFIGURATION

7.2kg (12x0.6kg)  
 8kg (8x1kg)  
 450kg (45x10kg) jumbo

## CHICKEN BREAST STRIPS SOUTHERN FRIED

Breaded chicken breast strips  
*Tiras de pechuga empanizadas*  
*Tiras de peito empanadas*



### PACKAGING

IQF/Bags

### CARTON CONFIGURATION

7.2kg (12x0.6kg)  
 8kg (8x1kg)  
 450kg (45x10kg) jumbo



---

# SAUSAGES

## LINGUIÇAS



Chicken Sausage Traditional C.Vale  
Embutido de Pollo Tradicional C.Vale  
Linguiça de Frango Tradicional C.Vale

# SAUSAGE

## CHICKEN SAUSAGE FINE HERBS

Chicken sausage fine herbs  
*Embutido de pollo a las finas hierbas*  
*Linguiça de frango com ervas finas*



### PACKAGING

Bags

### CARTON CONFIGURATION

16kg (16x1kg)

## CHICKEN SAUSAGE TRADITIONAL

Chicken sausage traditional  
*Embutido de pollo tradicional*  
*Linguiça de frango tradicional*



### PACKAGING

Bags

### CARTON CONFIGURATION

16kg (16x1kg)

---

**C.Vale - Cooperativa Agroindustrial**

2000, Ariosvaldo Bitencourt Avenue  
85950-000 - Palotina / Paraná / Brazil

Phone +55 44 3649.8306 / 3649.8242  
sales@cvale.com.br

[www.cvale.com.br](http://www.cvale.com.br)

